

August 2015

Vol. 2015, Issue 5

# GCMTA News

## Notes From the President

Greetings GCMTA members!

Seasons are exciting in many ways. Summer brings with it a slightly slower pace, a change of routine and a time to rest, restore & recharge. As a different tempo creates space to reflect, I consider the past year of teaching. What went well? How might I make improvements going forward? How can I motivate students to practice more and reach higher goals? What new music do I need to introduce that will challenge & inspire them? How can I grow to be a more successful teacher? I'm sure you ponder similar questions, and all are good.

The wondrous thing about seasons is the fact that the world around us is in constant change. From photosynthesis to the shifting clouds and colors that create a majestic sunset...life is about transformation. Our teaching follows the same principal of forward motion. I know more today than when I began teaching in 1985, and my goal is to continue learning throughout my life. I believe as members of GCMTA we all share that goal – pressing on to learn so that our teaching improves day by day. Consider this quote, "Always walk through life as if you have something new to learn and you will," (Vernon Howard). Don't feel overwhelmed. Remember, we'll never be perfect teachers. Just make one step, move forward, and take advantage of some of the offerings.

Opportunities for growth are as close as a few clicks of the computer with websites, music blogs, magazine subscriptions and other resources in endless supply. Consider some of the following: [claviercompanion.com](http://claviercompanion.com) [susanparadis.com](http://susanparadis.com) [teachpianotoday.com](http://teachpianotoday.com) [colorinmypiano.com](http://colorinmypiano.com) [dictionary.onmusic.org](http://dictionary.onmusic.org)

GCMTA, GMTA and MTNA, encourage continued professional development, and here are a few of the resources available to you this year:

- Inspiring and educational programs at our meetings each fourth Wednesday of the month.
- Events like Music Day, Federated Festival and others. Preparing students will allow you both to grow.
- GCMTA and MTNA websites [gcmta.org/home/index/links/resources](http://gcmta.org/home/index/links/resources) & [mtna.org/member-resources/teaching-tips](http://mtna.org/member-resources/teaching-tips)
- GMTA state conference November 5-7 at Agnes Scott College in Decatur
- Articles in American Music Teacher magazine.
- Your fellow teachers! Talk with each other after meetings, over lunch or meet in one another's studios to share and brainstorm teaching ideas. We have so much to offer each other!

In closing, I want to express my sincere and humble gratitude for your allowing me the privilege to serve as GCMTA president for the next two years. I accepted this responsibility because I've seen how very well our members work as a team, therefore I know I am surrounded by people who care and support each other. My heartfelt thanks go to our incoming officers, **Eva Bone** (President-elect), **Pam Asberry** (secretary) and **Gloria Park** (treasurer) for agreeing to serve alongside me. And to the many chairmen who will be responsible for the various areas that make GCMTA the stellar organization it is, please accept my genuine appreciation. You all are the best, and it is my joy to work with you!

I look forward to seeing all of you Wednesday, September 23 at Lawrenceville Church of God for our first meeting of the year. We will gather at 9:30 for coffee and begin the meeting promptly at 9:45.

Musically,

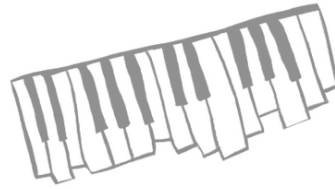
- Mary Ann McTier, President

### Inside this Issue:

Teaching Opportunity	2
Programs	2
Ensemble Extravaganza	3
Federated Notes	3
Program Schedule	3
Music Day 2015	4
MTNA Certification	4
MusicLink Foundation	4
Publicity	5
Executive Board Meeting	5
Asberry & Hardy	5
Websites	6

### Come to our meetings!

- ✓ Meetings are usually on the 4th Wednesday of every month
- ✓ They are at Lawrenceville Church of God unless otherwise noted
- ✓ They begin at 9:30 and end by noon
- ✓ See Page 3 for the Program Schedule



## Teaching Opportunity

Gwinnett Christian Terrace, a senior living facility located in Lilburn, has five residents who are interested in taking group piano lessons. Lessons would be taught with them taking turns playing the keyboard that is there. GCT will guarantee \$30/lesson, plus each resident will pay \$2/lesson, totaling \$40 each week. GCT will pay monthly, with the residents paying their portion a week in advance, excluding the first lesson which would be complimentary. They are eager to start and would very much like to begin in September. Most of them have had some piano experience. Interested teachers please contact Melody McTier at [melody.mctier@christianterrace.com](mailto:melody.mctier@christianterrace.com)



## Sympathy

We offer our deepest sympathy and prayers to Robin Engleman on the death of her husband, Phil. You may send a card to Robin at 5518 Chimney Hollow, Norcross, GA 30093. Donations in Phil's memory may be made to the GMTA Award Fund by contacting Mandy Reynolds

at [georgiamta@gmail.com](mailto:georgiamta@gmail.com)

## 2015-2016 Programs

Would you like to learn how to use an iPad in your studio? Need Help with those younger energetic students? Stress about the business side of your studio or need inspiration for the upcoming year? If you answered "yes" to any of these questions, then be sure to attend the 2015-2016 GCMTA meetings. We have programs lined up that are practical, fun, educational and will enrich your studio. You and your students will benefit from your participation in GCMTA this year!

We welcome back Dr. Jerico Vasquez in September for his talk on Creative Housekeeping: The Private Studio as a Business. October we are looking forward to hearing Sarah Moore present – Help! My Students Aren't Listening! Is it Me or Them? Effective Strategies for Engaging Young Learners. We are glad to welcome Charles Hutton (he was snowed out last February) as he gives his Introduction to Charles Valentin. January is a favorite meeting of the year with Brunch and a much anticipated sharing of Music Games. In February we welcome our own Natalie Hardy as she presents the iPad in the studio. March is Master Class month with David Watkins as the presenter and we will conclude our year in May with our annual luncheon and a discussion of the book by Doborah Rambo Sinn, "Playing Beyond the Notes: A Pianist's Guide to Musical Interpretation."

We are also looking for willing door monitors for the September Meeting: 9:20 & 9:35. If you come after 9:50 please knock on the window! The church asks that all member use the side door next to the music room.

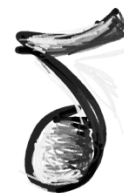
Looking forward to a great year of cooperation!

~ Eva Bone



## Ensemble Extravaganza

Ensemble playing educates the entire musician like nothing else does, and that's the reason behind GCMTA's Ensemble Extravaganza Concert.



This year's event will be held on Saturday, April 30, 2016 at 3PM at PianoWorks in Duluth, GA. The application deadline is March 23, 2016; registration forms and further details may be found in the directory.

Open to students of all ages and levels, the format for this competition is an open audition. First and second place medals will be awarded in four different categories. Hope you and your students will join in the fun!

## Federated Notes



Please make a note of the GCMTA District Festivals for 2016:  
**West** – Saturday, February 13, 2016 @ Berean Baptist Church, Snellville

**North** – Saturday, February 13, 2016 @ 1<sup>st</sup> Baptist Church, Duluth

**Central** – Saturday, March 5, 2016 @ Berean Baptist Church, Snellville

Remember that the Jr/Sr dues deadline is the September meeting on the 23<sup>rd</sup> at Lawrenceville Church of God. The Jr/Sr registration form will be in the September newsletter and on the website and Directory.

Please stay tuned to newsletters, meeting announcements and the website for updates to National on line registration for 2016. We don't have all the details yet so will be posting information as it becomes available. The piece of information that you need to know now is that every registering teacher will need an email account with Gmail, which is free. This can be an existing email account or a new, dedicated account just for Federated registering. If there are any questions about this, please contact Nora Martin.

## 2014-2015 Program Schedule

*September* – **Dr. Jerico Vasquez**

Creative Housekeeping: The Private Studio as a Business

*October* – **Sarah Moore**

Help! My Students Aren't Listening! Is it Me or Them?: Effective Strategies for Engaging Young Learners

*November* – **Charles Hutton**

Introduction to Charles-Valentin

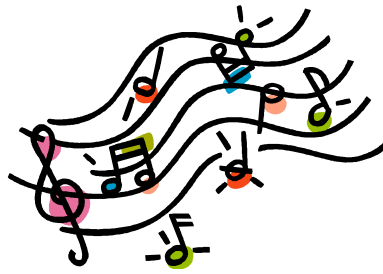
*January* – Music Games & Brunch

*February* – **Natalie Hardy**

How to use an iPad in the Studio

*March* – Master Class - **David Watkins**

*May* – Book Discussion of Playing Beyond the Notes: A Pianist's Guide to Musical Interpretation by **Deborah Rambo Sinn**



## Music Day

It's time to start preparing for Fall Music Day again! This year it is scheduled for November 14th at First Baptist Church Duluth. The application deadline is October 9. Check the directory for updated information & guidelines.

## MTNA

## Certification

"One of the privileges of being a member of MTNA is the assurance that the organization is dedicated to encouraging excellence in the teaching of music. Nothing speaks to this more eloquently than the National Certification Commission."

*Nelita True, NCTM*

[mtnacertification.org/certification-overview](http://mtnacertification.org/certification-overview)



Think, for a minute, about that rare student who comes to you loving music and already showing musical talent. The one who is eager to learn and, as a result, progresses quickly. Think of that student, whom you view proudly as he or she excels at exams, wins contests, or is chosen for first chair in the school orchestra.

Now imagine that this student was never able to take lessons—never had the opportunity to realize their musical potential. This happens every day, everywhere. Many children's families don't have the financial means to provide lessons for their children.

Each of us, however, can change a life for the better by agreeing to teach just one of these students for reduced or no charge. Through the program, MusicLink, this student can be hand picked by a music teacher who already has identified him or her as musically talented and eager to learn. The initiation process is simple and many systems are in place to help you get started and support you along the way. Perhaps you are already teaching a child on scholarship. By completing one form on line, you can take advantage of the many discounts and opportunities available to students and teachers by becoming a part of MusicLink.

If you would like to learn more, log onto the MusicLink website at [www.musiclinkfoundation.org](http://www.musiclinkfoundation.org). We encourage you to join us by clicking on "How to Participate" at the top of the Home Page. If you are already teaching a student on scholarship, complete the ML Registration Form to become part of the program. If you want to volunteer to teach a student, complete the Teacher Volunteer Form.

Email us to request a packet of information to share with colleagues to begin a local MusicLink program in your community. You can make a huge difference in the life of a child. We know. We have reached over 6000 students in all 50 states and several Canadian provinces, creating musicians, one student at a time.

To find your local coordinator on the MusicLink website or contact your SE Regional Coordinator, Nora Martin, at [wolf1193@charter.net](mailto:wolf1193@charter.net).

## Publicity



Are you on Facebook? If so, please "like" Gwinnett County Music Teacher's Association Facebook page to stay up to date on what's happening with the organization. Then join our Facebook group where you can share your knowledge, ask questions, and get to know your fellow members. There's no better way to keep in touch between monthly meetings. Hope to see you online soon!

~Pam Asberry, Chair



## Executive Board Meeting

Wednesday, August 26 at 9:30a.m. there will be an executive board meeting for all officers and committee chairs at Mary Ann's house, 1955 Shrader Ct. Lawrenceville Ga 30044. Please be prepared to give a report for your area of responsibility. Event chairs should be prepared with dates/other vital info. Please email me at [mam0609@comcast.net](mailto:mam0609@comcast.net) if you have any questions or won't be able to attend. We'll be done by noon.

## Dynamic Duo



GCMTA members Pam Asberry & Natalie Hardy will present a duo piano recital on

**Saturday, September 19,  
2015 at 5:00 p.m.  
at PianoWorks in Duluth GA**

Featuring works by Vivaldi, Mozart, Gottschalk, Arensky, Debussy, Stravinsky, Bernstein and others, this eclectic program offers something for everyone. Refreshments will be served. All are welcome to attend this FREE event!







## GCMTA News

Mary Ann McTier, President

mam0609@comcast.net

Georgia Music Teachers Association  
[www.georgiamta.org](http://www.georgiamta.org)

Music Teachers National Association  
[www.mtna.org](http://www.mtna.org)

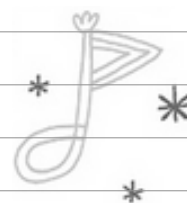
Gwinnett County Music Teachers Association  
[www.gcmta.org](http://www.gcmta.org)

Dear GCMTA Friends,

Thank you so very much for your thoughts and prayers for me and my family over the past few weeks during the brief hospitalization and passing of my husband, Phil. It was good seeing so many of you at his memorial (celebration of life) service last Friday. Your love and support mean so much during this difficult time.

Love,

Robin



### PIANO FOR SALE

1972 Kranich & Bach console upright piano with bench; mahogany finish, technician refurbished; Norcross, GA. price: \$1275 plus delivery; please call for appt. to see:

Contact Bob McMullen  
**678-372-0726**



## Newsletter

If you have information that needs to go in the newsletter, please email it to [gcmfamail@gmail.com](mailto:gcmfamail@gmail.com). Label your email with "newsletter" in the subject line. You can also call me at 404-819-0644. Please send me your information as you want it worded in the newsletter, and have it to me by the 1st of the month. Please try not to do too much formatting on your information (spacing, tabs, etc.) Leave that up to me. Thank you!

Natalie Hardy